

Safety first!

Whether we are awake or asleep, we depend on electricity. Grundy County REC is committed to providing our members safe and reliable electric service. The core of this mission is safety. Safety is what all of the other components must revolve around. It is often easy to take the power and potential dangers of electricity for granted. That's why Grundy County REC is dedicated to ongoing safety training, education and accountability for all employees, members, neighbors and partners. It's a commitment your board members and employees take very seriously.

Electricity demands our respect. Electricity travels at the speed of light – that's about 186,000 miles per second! At that speed, waiting to react is too late. Electricity is distributed at 120 volts at most outlets. A typical distribution line has 7,200 volts per wire. We continuously devote attention and resources to reducing harm that can come from contact with power lines or electrical sources.

To ensure the co-op's electrical system can withstand the seasonal stresses of Mother Nature, Grundy County has a maintenance plan, line inspection program and line patrol procedures in place in which we inspect our system annually. Through these programs we check each pole to detect and fix any damage or breaks that could pose threats to the safety of the system. On an ongoing basis, our vegetation management program helps to ensure trees have not grown or been planted in places that make them a potential safety hazard. Be sure and contact our office if you suspect vegetation may be too close to power lines.

Our safety program places emphasis on continued education and support from the Iowa Association of Electric Cooperative's (IAEC) Safety and Loss Control team to help get the job done, safely. Here are some examples of the benefits of our safety program.

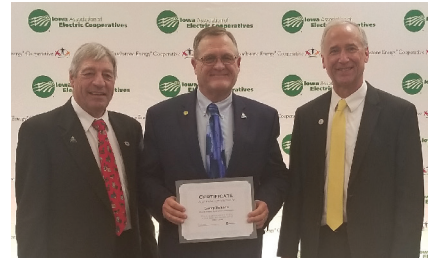
- Daily job reviews, called "tailgates," are done every morning and on after-hours call-outs to ensure the proper material is available, crews understand their role and that all personal protective equipment (PPE) is on their trucks and potential hazards are identified.
- Each employee is supplied with industry-leading PPE to keep them safe while working.
- Employees meet monthly for safety meetings addressing various safety topics.
- A first aid kit and AED's are readily available on trucks and all employees are CPR/first aid trained and certified.

We're proud of our strong ongoing commitment to ensuring safety for our employees and members. Remember to **Look up ... Look down ... Look out ... and LIVE!**

Safety is our number one priority!



Lineman installing new primary underground cable to a new service.



Larry Rohach (center) is presented his 25-year service award by Steve Seidl (left), IAEC president, and Chuck Soderberg (right), IAEC executive vice president/general manager.

Years of service recognized

The success of Grundy County REC over the past 82 years can be attributed to the hard work and dedication of the employees and directors who work to ensure the cooperative members receive the best possible service.

Larry Rohach was recognized in November by Grundy County REC and in December by the Iowa Association of Electric Cooperatives (IAEC) for his 25 years of service as a district 4 director.

Grundy County REC scholarships

Grundy County REC will again award three \$750 scholarships to students of a member of the cooperative. The scholarships go directly to the school of the student's choice to assist with college tuition.

Please contact the office at 319.824.5251 or go online at grundycountyrecia.com.

Deadline to apply is Feb. 6, 2019.

Electric cooperatives' post-election priorities

With the midterm elections in the rearview mirror, your electric cooperative is looking ahead at the impact and opportunities for rural America and electric cooperatives.

Electric cooperatives across the nation played an active role in the midterm election and worked to get to know each candidate running for federal office. This was particularly important since more than 60 members of Congress retired or ran for another office.

As we continue getting to know our new elected officials, we will continue advocating for policies that protect local business interests and advance the quality of life in our communities.

There are several opportunities for our elected leaders to find common ground and advance legislation to benefit our community.

Improving our nation's aging infrastructure is a great place to start. Congress and the White House should explore an infrastructure package that benefits all Americans, especially those at risk of being left behind in rural America. Congress should leverage an infrastructure package to help maintain and modernize the electric grid and connect rural communities to the modern economy.

A second area of possible bipartisan agreement lies in the need to produce a new farm bill. The farm bill, which authorizes numerous rural economic development programs, traditionally has enjoyed bipartisan support in Congress. Although the House and Senate have passed very different versions of a farm bill, we're hopeful that lawmakers can come to an agreement on a compromise bill that promotes rural economic development and protects Rural Utilities Service electric loan funding on which electric co-ops depend.

Electric cooperatives are engines of economic development. And we are proud to continue working toward a brighter and more prosperous rural America.



Downed and Dangerous

If you see a downed power line, always assume it is energized and dangerous. Avoid going near it or anything in contact with the power line.



Downed power lines can energize the ground up to 35 ft. away - so keep your distance.



Never drive over a downed line or through water that is touching the line.



If you see a downed line, notify the local authorities immediately.



Never try to move a downed power line, even if you think the line is deenergized or if you're using a non-conductive item - this will not prevent injury or death!

LED holiday lighting rebate: \$2 per item
Contact us for details!



Scholarships available

We have information about scholarship opportunities for those planning to attend college or technical school next year!

Contact us soon as deadlines vary.



A Touchstone Energy[®] Cooperative

Sign up for Smart Choices

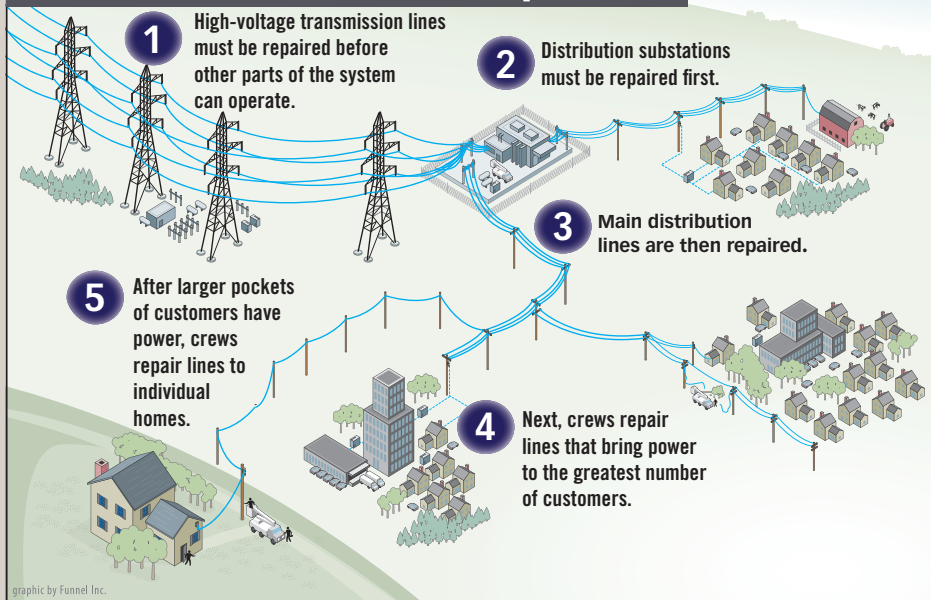
Are you interested in reading more about energy efficiency? Electrical safety? Family finances?

You'll receive information on those topics and more in our monthly e-newsletter Smart Choices!

Contact us today to sign up.

smart choices 

How line crews restore power



When a widespread outage occurs, line crews work long, hard hours to restore service safely to the greatest number of members in the shortest time possible. Working from substations to homes results in faster repairs for the most members.

POWER OUTAGE MAP

Information about power outages affecting electric cooperative members in Iowa is available online. To see a statewide map of power outages, go to your local electric cooperative's website:

- www.butlerrec.coop
- www.franklinrec.coop
- www.grundycountyrecia.org
- www.prairieenergy.coop

Beware of cheap chargers

The chargers that come with our electronics seem to disappear as often as a sock mate. Many people then reach for low-cost, generic chargers and charging cables.

But along with being a potential fire hazard, using cheaply made charging components and devices can also cause electrocution and may cost you more in the long run since they can cause damage to whatever's on the other end of the charging cable.

To keep safe around electrical devices and charging gear:

- Do not leave items unattended.
- Always keep charging items away from flammable objects, and do not take them to bed with you.
- Do not touch charging electronics with wet hands or while standing in water.
- Make sure charging components are certified by a reputable third-party testing laboratory.
- Only buy product-approved chargers and cables (those made or certified by the manufacturer).

TIPS TO SAFELY CHARGE YOUR ELECTRONICS

- Sale** Don't buy cheaply made, off-brand charging cubes and cables. They can be **potential fire hazards**, cause electrocution, or damage the device.
- Throw away charger blocks and cords that are worn or damaged and **make sure they are not hot** when charging devices.
- NOT IN BED** Only charge devices on a **hard, flat, noncombustible surface** to allow for adequate ventilation.
- Do not touch any electronic devices that are charging **when you are wet** or standing in water.

Learn more at SafeElectricity.org

Check out our rebates!

- **Appliances (Energy-Star Rated):** Clothes dryer, clothes washer, dishwasher, freezer, refrigerator
- **Central Air Conditioning**
- **Heat Pumps:** Air source and geothermal
- **Insulation & Weatherization:** Ceiling, foundation and wall insulation; duct insulation; weatherization
- **Lighting:** Bulbs, fixtures, security lights, holiday lights
- **New Homes**
- **Water Heaters:** Electric, heat pump, solar

Small changes can mean big energy savings. Contact your electric cooperative to learn more about rebates.

Bill payment options

Grundy County REC offers a variety of bill payment options:



- Pay by mail. Mail the bottom portion of your bill with your payment in the envelope provided. Allow 4 to 5 working days for delivery.
- Pay in person. Payments are accepted at our office from 8 a.m. to 4:30 p.m., Monday – Friday.
- Pay using the night depository. In the box located at our headquarters, deposit the bottom portion of your bill and your payment using the envelope provided.
- Pay online: grundycountyrecia.org. Click on “Pay My Bill” in the upper right-hand corner. We accept Visa and Mastercard.
- Bank draft. Your energy bill will be deducted directly from your bank account. Call our office to sign up. You’ll continue to receive a monthly statement but we’ll automatically deduct your payment through your financial institution on the 30th of each month.
- Budget billing. This plan gives you more control over billing swings. You pay a fixed amount each month based on your last 12 months’ energy use divided into 12 equal amounts. Your budget payment is adjusted each year to account for changes in annual energy usage.
- Go paperless. You’ll receive an email notification when your statement is available online.

Anyone making payments to avoid disconnection must contact the cooperative immediately after making a payment.

For more information about any of these free services, please contact the cooperative at 319-824-5251 or 800-390-7605.

Co-op Connections card

Featured Business of the Month

Use your Co-op Connections card at Tasty House in Grundy Center. Tasty House offers delicious dining and takeout. Tasty House is a cornerstone in the Grundy Center community and has been recognized for its outstanding Chinese cuisine, excellent service and friendly staff. Tasty House is known for its modern interpretation of classic dishes and its insistence on only using high-quality fresh ingredients.

Other area businesses offering discounts:

- 319 Décor & Design - Grundy Center
- Crazy Daisies - Grundy Center
- Natural Grind - Grundy Center
- Stylish Living - Grundy Center
- The Landmark Bistro - Grundy Center
- Retro Rooster - Traer
- Sweets on Main - Traer
- Traer Theater - Traer



Air source heat pump rebate

Recently Grundy County REC made the decision to increase the rebate for air source heat pumps that have a gas automatic heat backup and members sign a Load Control Agreement form. Our new air source rebate will increase from \$200/ton to \$300/ton.

An air source heat pump can provide efficient heating and cooling for your home. When properly installed, an air-source heat pump can deliver one-and-a-half to three times more heat energy to a home than the electrical energy it consumes. This is possible because a heat pump moves heat rather than converting it from a fuel like combustion heating systems do.

Air source heat pumps have been used for many years in nearly all parts of the United States, but until recently they have not been used in areas that experienced extended periods of subfreezing temperatures. However, in recent years, air source heat pump technology has advanced so that it now offers a legitimate space heating alternative in colder regions.

Contact us for more information on air source heat pumps and rebates.



Solar resource

We are proud to provide co-op members and their surrounding communities with local, trusted energy options. Interested in installing a new solar system? Contact Mike Geerdes, member service manager, at 319-824-5251 or 800-390-7605.



INtouch is published monthly for members and associates of Grundy County Rural Electric Cooperative
303 N Park Avenue • P.O. Box 39 • Grundy Center, IA 50638-0039
PHONES: 319.824.5251 or 800.390.7605 • FAX: 319.824.3118
OFFICE HOURS: Mon. - Fri., 8:00 a.m. to 4:30 p.m.
GENERAL MANAGER: Vicki Daily

smart choices



Follow us on Facebook at
www.facebook.com/GrundyCountyREC

Sign up for Smart Choices e-newsletter at
www.grundycountyrecia.com

Visit us online at www.grundycountyrecia.com

This institution is an equal opportunity provider and employer.